

Tau Beta Pi

Caffeine T-shirt Order Form

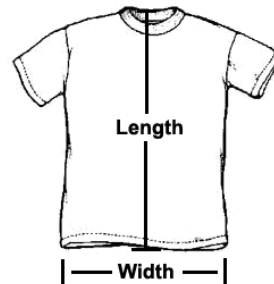
Print and fill-out the information below. Enclose this form with a check or money order to "Tau Beta Pi". Send the completed form and payment to:

Matt Kelsey - Tau Beta Pi
College of Engineering
Southern Illinois University at Carbondale
Carbondale, IL 62901-6603

Please enter the number of each size you would like for each shirt.
 Shirts are Charcoal gray with bright green graphics

___ Small ___ Medium ___ Large ___ Extra-large @ \$13.00 (\$12 plus \$1 shipping)
 ___ XXL @ \$14.00 (\$13 plus \$1 shipping) ___ XXXL @ \$15.00 (\$14 plus \$1 shipping)

_____ **Total \$ amount enclosed**



	Sm	Med	Lg	XL	XXL
Width	18"	20"	21.5"	24"	25.5"
Length	27.5"	29"	29.5"	30.5"	31"

Your shipping address:

Name: _____

Address: _____

City: _____ State/Province: _____

Zip: _____ Country: _____

Email: _____

(enter an email if you desire electronic confirmation ;that your order has been received & shipped)

Proceeds from T-shirt sales support Tau Beta Pi activities such as: The Bicycle Project, Breakfasts at Good Sam, Campus Lake Cleanup and participation in the American Cancer Society's Relay for Life. See www.engr.siu.edu/tbp for details.