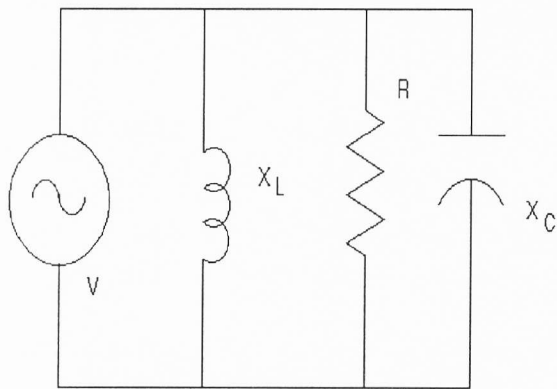


ET 332b
Single Phase AC Power Homework

In the circuit below:

1. find the active and reactive power absorbed by the circuit
2. draw the power triangle for the circuit
3. find the power factor of the circuit
4. find magnitude of the current from the source



$$V = 200 \angle 0^\circ \quad X_C = 24 \, \Omega \quad X_L = 35 \, \Omega \\ R = 17 \, \Omega$$